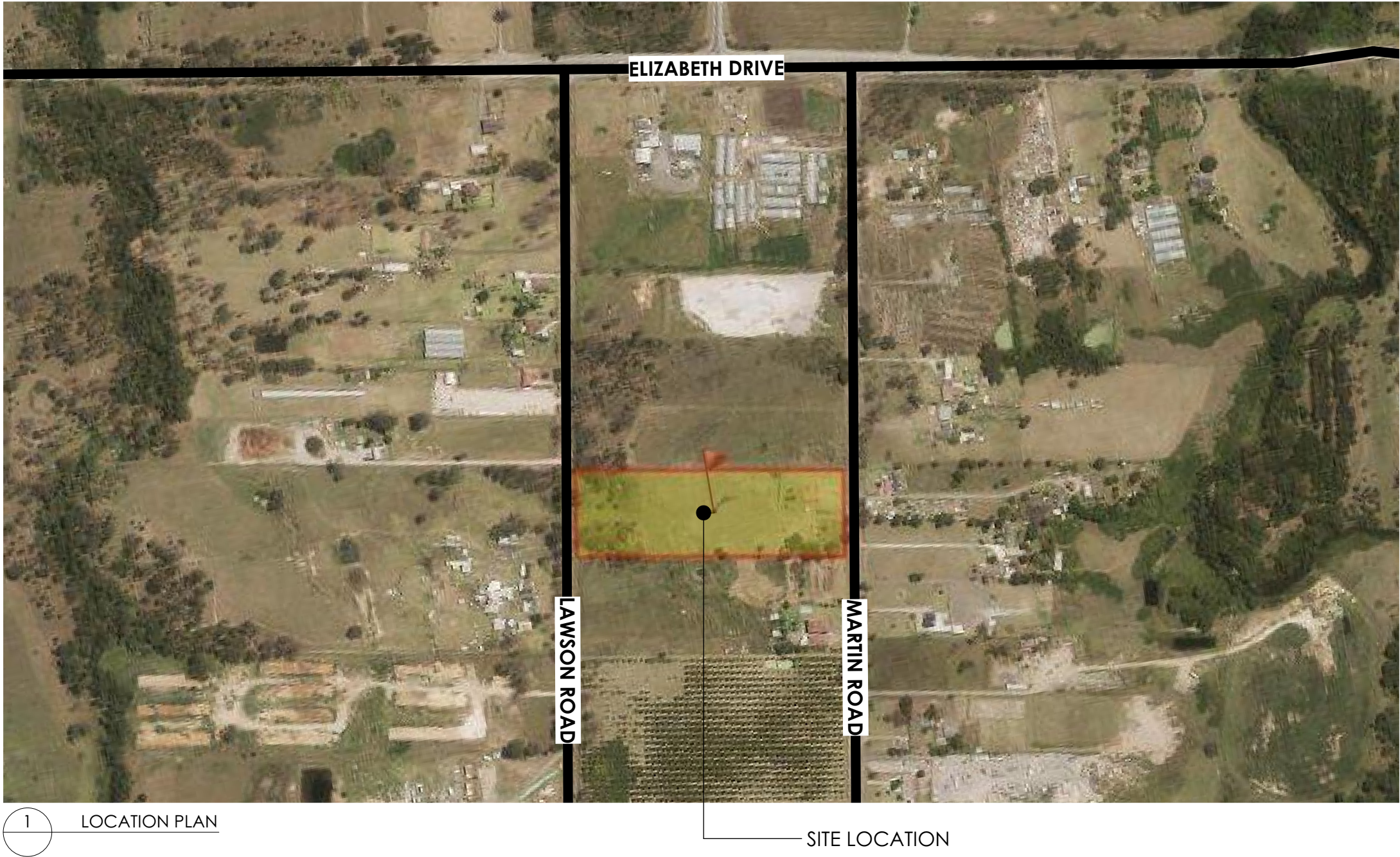


DRAWING LIST

- 00 COVER SHEET
- 01 LOCATION PLAN
- 02 SITE ANALYSIS PLAN
- 03 SITE PLAN WITH APPROVED DA FOOTPRINT OVERLAYED
- 04 DETAILED SHED PLAN
- 05 DETAILED SITE PLAN (PART A) - LAWSON RD WEST
- 06 DETAILED SITE PLAN (PART B) - MARTIN RD EAST
- 07 SHED AMENITIES FLOOR PLANS
- 08 PROCESSING SHED ELEVATIONS
- 09 SECTION THRU PROCESSING SHED
- 10 SECTION THRU STOCKPILE BUNKER
- 11 NEW OFFICE BUILDING GROUND FLOOR PLAN
- 12 NEW OFFICE BUILDING ELEVATIONS EAST & WEST
- 13 NEW OFFICE BUILDING ELEVATIONS NORTH & SOUTH
- 14 TRUCK ENTRY DRIVEWAY RAMP SECTIONS
- 15 STAFF CARPARK DRIVEWAY RAMP SECTIONS
- 16 FENCE ELEVATIONS FOR ACOUSTIC
- 17 FENCE ELEVATIONS FOR ACOUSTIC
- 18 VISUAL IMPACT ASSESSMENT-LOCATION PLAN
- 19 VISUAL IMPACT ASSESSMENT-VIEW 1
- 20 VISUAL IMPACT ASSESSMENT-VIEW 2
- 21 VISUAL IMPACT ASSESSMENT-VIEW 3
- 22 VISUAL IMPACT ASSESSMENT-VIEW 4
- 23 VISUAL IMPACT ASSESSMENT-VIEW 5
- 24 VISUAL IMPACT ASSESSMENT-VIEW 6



LIVERPOOL  
CITY  
COUNCIL

Endorsed document  
in relation to:  
  
DA-263/2018/A

In accordance with the  
Environmental Planning  
and Assessment Act  
1979

REV	DESCRIPTION
A	ISSUE FOR INFORMATION
B	ISSUE FOR PRE DA
C	LIST REVISED, ISSUED FOR INFORMATION
D	ISSUED FOR AMENDMENT TO APPROVED DA-263/2018

BY	DATE
VW	05.11.2018
DD	23.07.2019
DD	23.07.2019
DD	23.09.2019

CLIENT:

AMJ DEMOLITION &  
EXCAVATION

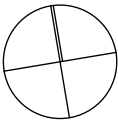
PROJECT TITLE:

55 MARTIN RD BADGERY'S CREEK  
WASTE RESOURCE RECOVERY FACILITY

DRAWING TITLE:

LOCATION PLAN

NORTH POINT:



DRAWN BY: VW / DD

CHECKED BY: PI

SCALE: N.T.S. @ A3

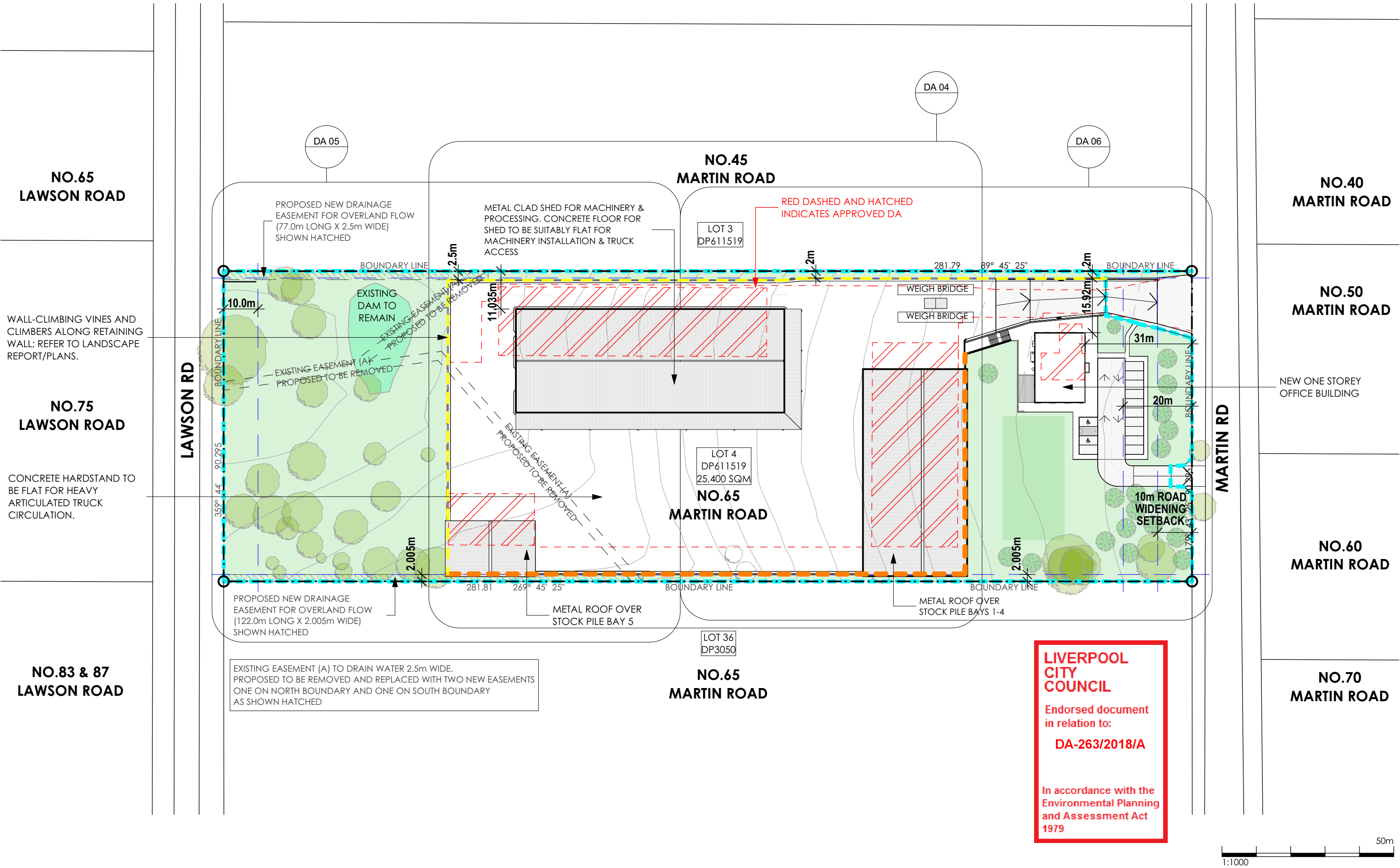
PROJECT No: P513

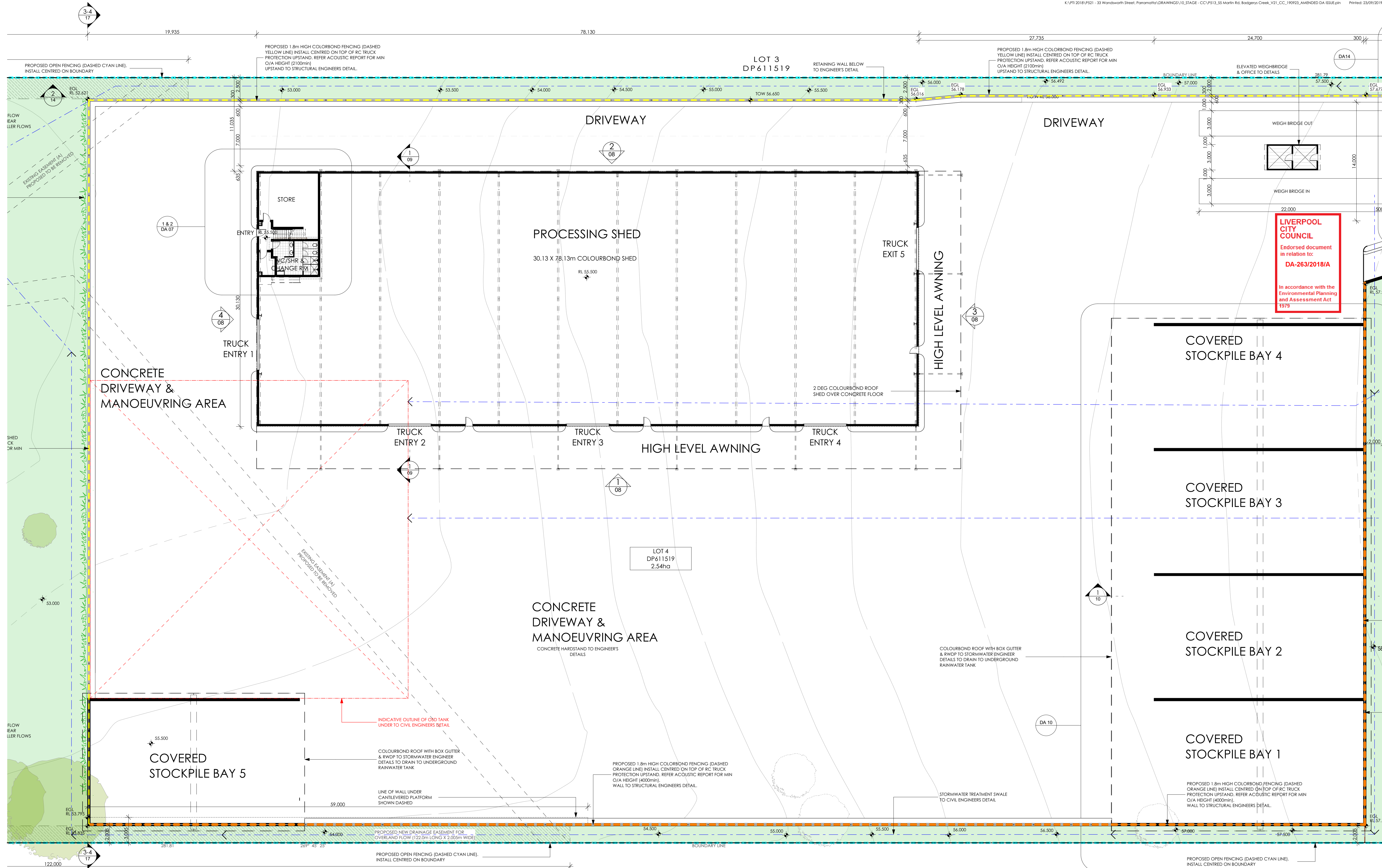
DA  
stage.

01  
dwg no.

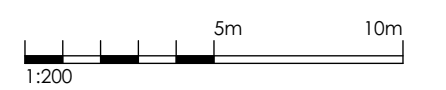
D  
revision







**NOTE: TO BE PRINTED @ A1**

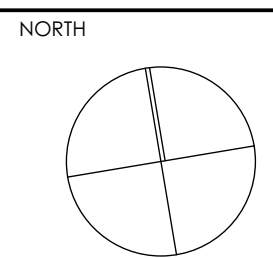


Main Office: Level 2, 68 Sophia Street, Surry Hills NSW 2010  
Parramatta Office: Suite 4103, 11 Hassall Street, Parramatta NSW 2150  
+ 61 2 9283 0860 | [www.ptiarchitecture.com.au](http://www.ptiarchitecture.com.au)  
Nominated Registered Architect: Peter Israel (reg no 5064)  
ABN 90 050 071 022

REV	DESCRIPTION	BY	CHK	DATE
A	DRAWING No. RE-USED, ISSUE FOR PRE DA	DD	PI	23.07.2019
B	SOUTH SETBACK ALTERED, ISSUE FOR INFORMATION	DD	PI	16.08.2019
C	TRUCK ENTRY 1 WIDTH ALTERED, SHEET RENAMED ISSUE FOR INFORMATION	DD	PI	29.08.2019
D	ISSUE FOR CONSULTANT REVIEW	DD	PI	16.09.2019
E	ISSUE FOR AMENDMENT TO APPROVED DA-263/2018	DD	PI	23.09.2019

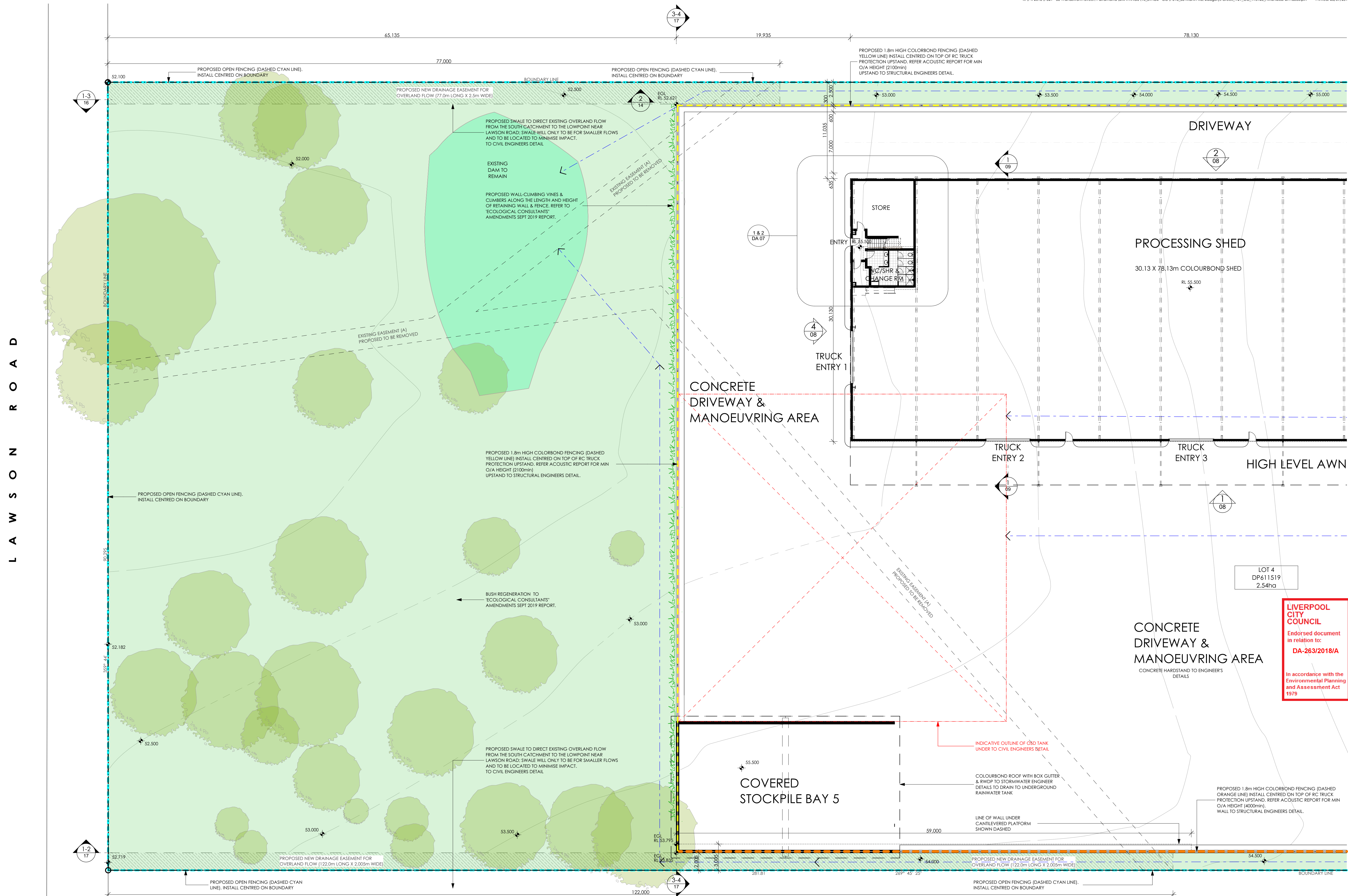
AMJ DEMOLITION &  
EXCAVATION

PROJECT  
55 MARTIN RD BADGERY'S CREEK  
WASTE RESOURCE RECOVERY FACILITY  
DRAWING  
DETAILED SHED PLAN

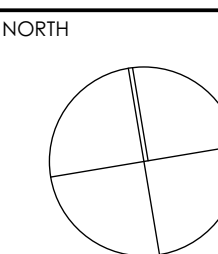
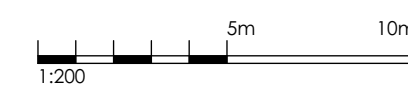


DRAWN	DD
CHECKED	PI
SCALE	1:200 @ A1 1:400 @ A3
PROJECT No	P513
04	E
dwg. no.	revision





**NOTE: TO BE PRINTED @ A1**



DRAWN	DD
CHECKED	PI
SCALE	1:200 @ A1 1:400 @ A3
PROJECT No	P513

DA      05      N  
stage.      dwg no.      revision

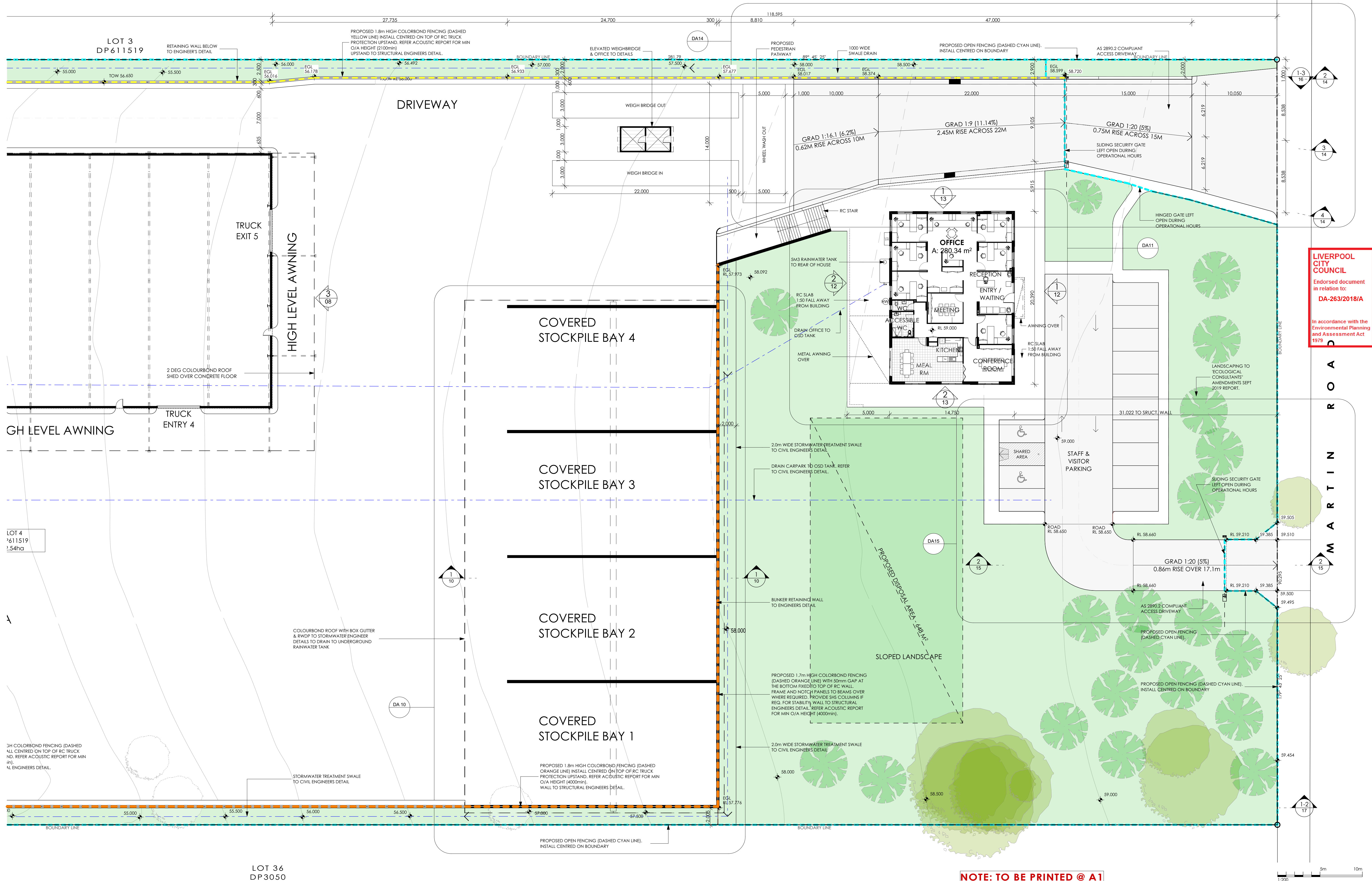
REV	DESCRIPTION	BY	CHK	DATE
J	SOUTH SETBACK ALTERED. ISSUE FOR INFORMATION	DD	PI	16.08.2019
K	EASEMENT NOTE ADDED. ISSUE FOR INFORMATION	DD	PI	20.08.2019
L	TRUCK ENTRY 1 WIDTH ALTERED. ISSUE FOR INFORMATION	DD	PI	29.08.2019
M	FENCE NOTES . ISSUE FOR CONSULTANT REVIEW	DD	PI	16.09.2019
N	ISSUE FOR AMENDMENT TO APPROVED DA-263/2018	DD	PI	23.09.2019

CLIENT  
AMJ DEMOLITION &  
EXCAVATION

PROJECT  
55 MARTIN RD BADGERY'S CREEK  
WASTE RESOURCE RECOVERY FACILITY

DRAWING  
DETAILED SITE PLAN (PART A) -  
LAWSON RD WEST





**LIVERPOOL CITY COUNCIL**  
Endorsed document  
in relation to:  
**DA-263/2018/A**  
  
In accordance with the  
Environmental Planning  
and Assessment Act  
1979

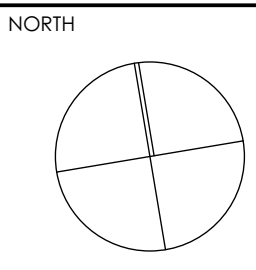
**NOTE: TO BE PRINTED @ A1**

REV	DESCRIPTION	BY	CHK	DATE	CLIENT
G	STAFF PARKING AMENDED, ISSUE FOR INFORMATION	DD	PI	16.08.2019	
H	TRUCK ENTRY 1 WIDTH ALTERED, ISSUE FOR INFORMATION	DD	PI	29.08.2019	
I	FENCE NOTES, ISSUE FOR CONSULTANT REVIEW	DD	PI	16.09.2019	
J	ISSUE FOR AMENDMENT TO APPROVED DA-263/2018	DD	PI	23.09.2019	

## AMJ DEMOLITION & EXCAVATION

PROJECT  
55 MARTIN RD BADGERY'S CREEK  
WASTE RESOURCE RECOVERY FACILITY

DRAWING  
DETAILED SITE PLAN (PART B) -  
MARTIN RD EAST



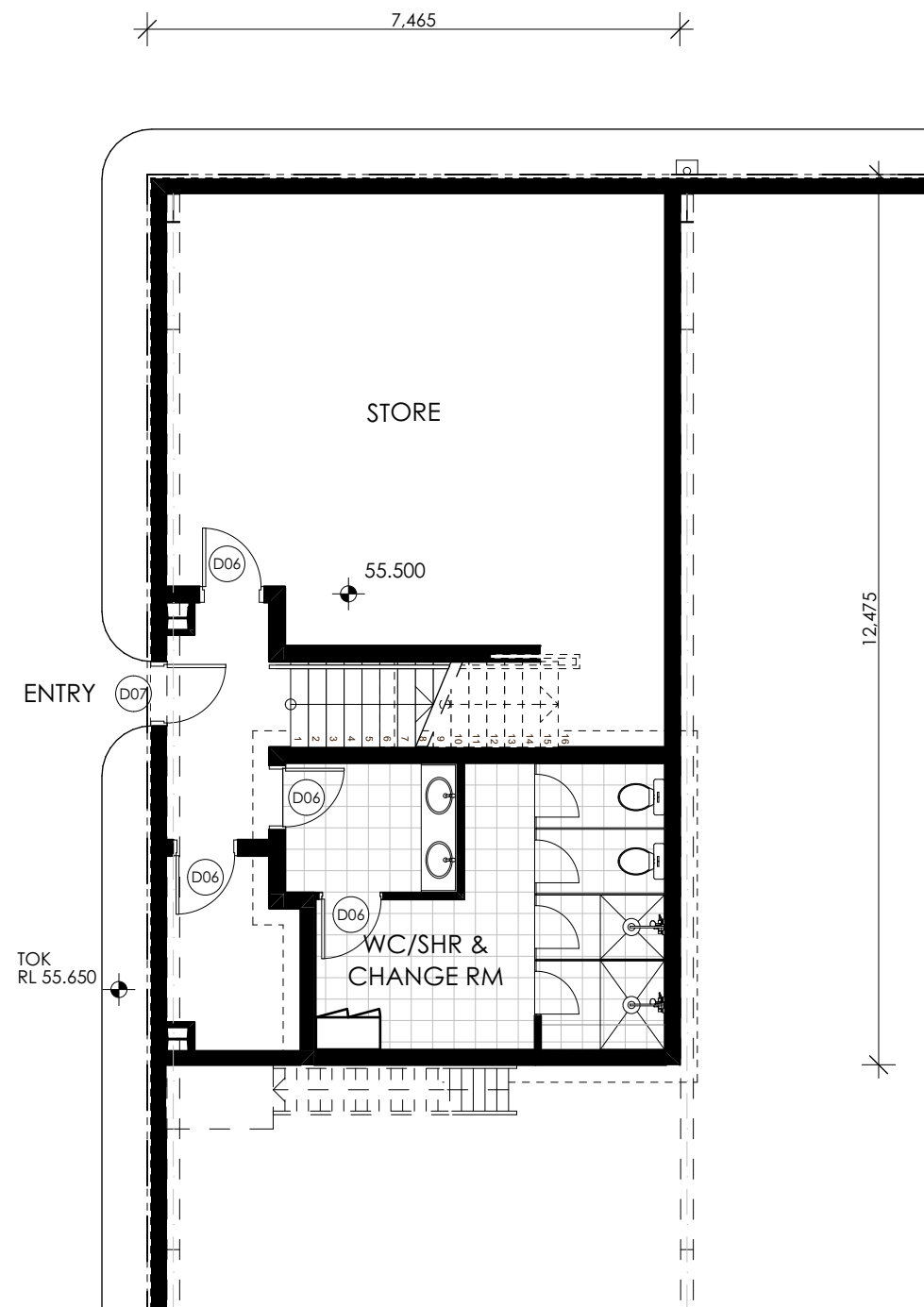
DRAWN	DD
CHECKED	PI
SCALE	1:200 @ A1 1:400 @ A3
PROJECT NO	P513
DA	06
stage	chng no.
J	revision

**LIVERPOOL  
CITY  
COUNCIL**

Endorsed document  
in relation to:

**DA-263/2018/A**

In accordance with the  
Environmental Planning  
and Assessment Act  
1979



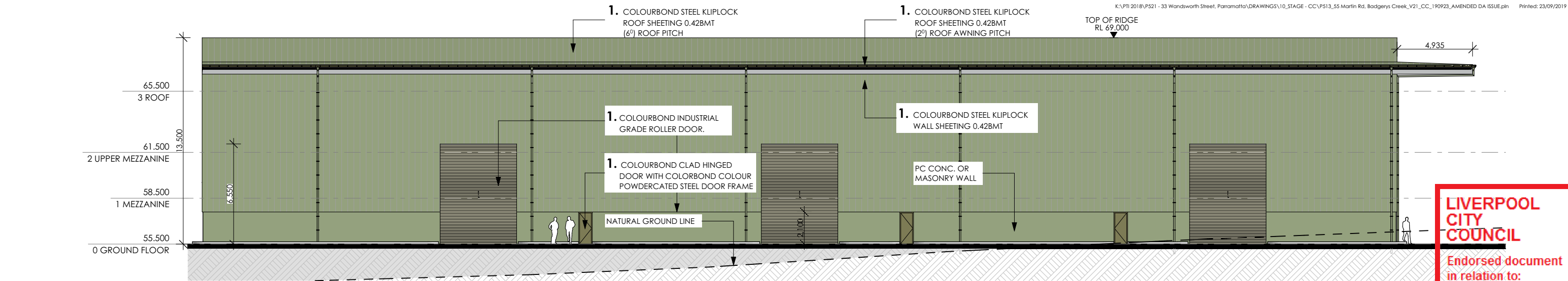
1 SHED AMENITIES GROUND FLOOR PLAN  
1:100



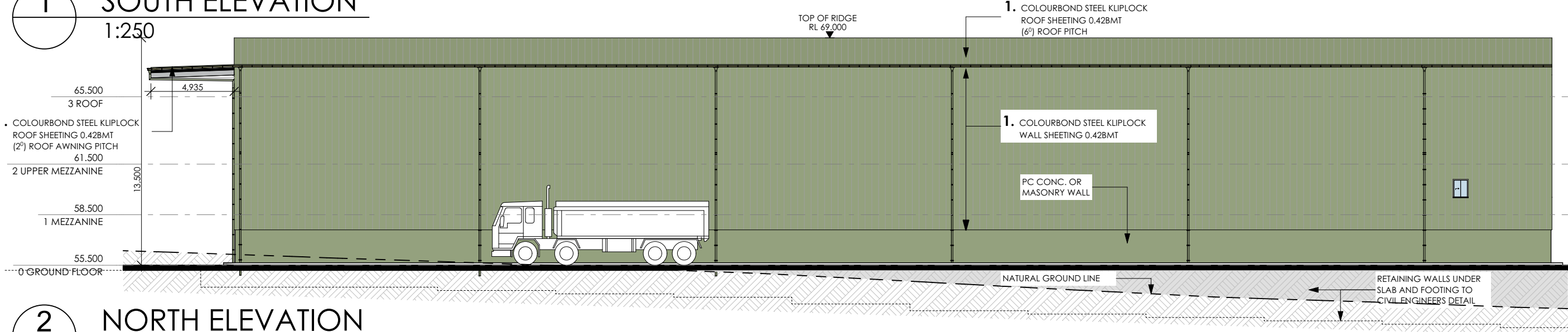
2 SHED AMENITIES 1ST FLOOR PLAN  
1:100



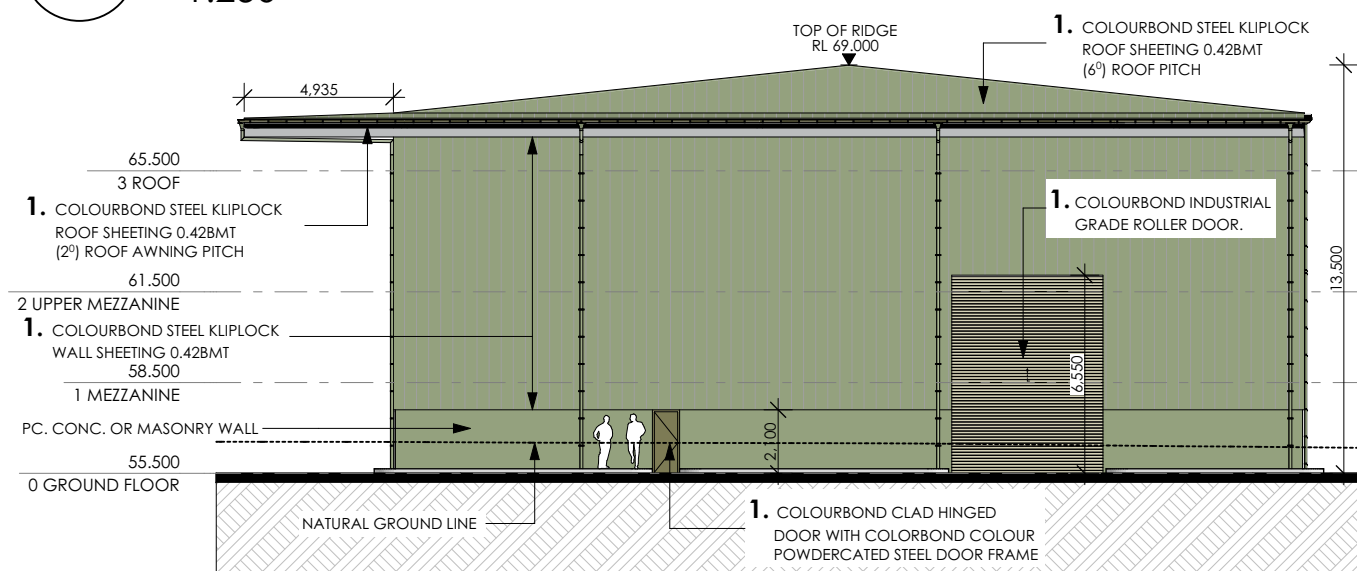




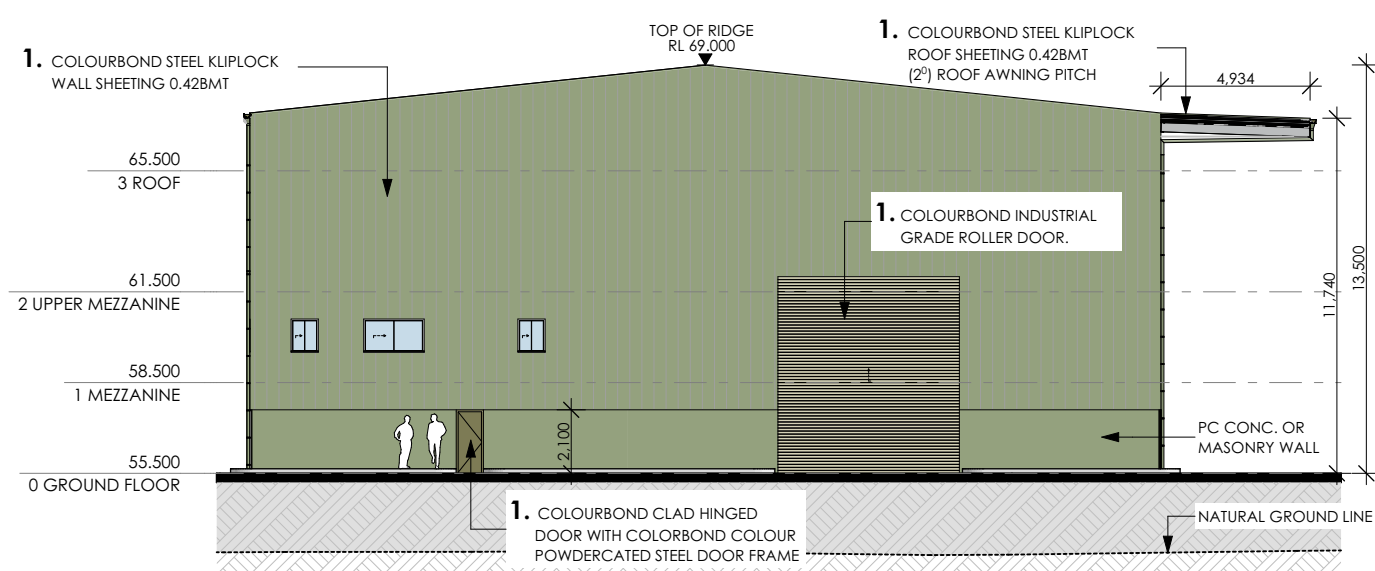
1 SOUTH ELEVATION  
1:250



2 NORTH ELEVATION  
1:250



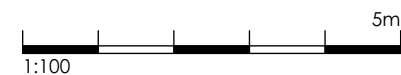
3 EAST ELEVATION  
1:250



4 WEST ELEVATION  
1:250



1. EXTERIOR COLORBOND CLADDING FOR SHED, BUNK ROOF & PERIMETER FENCE  
Colorbond 'PALE EUCALYPT'

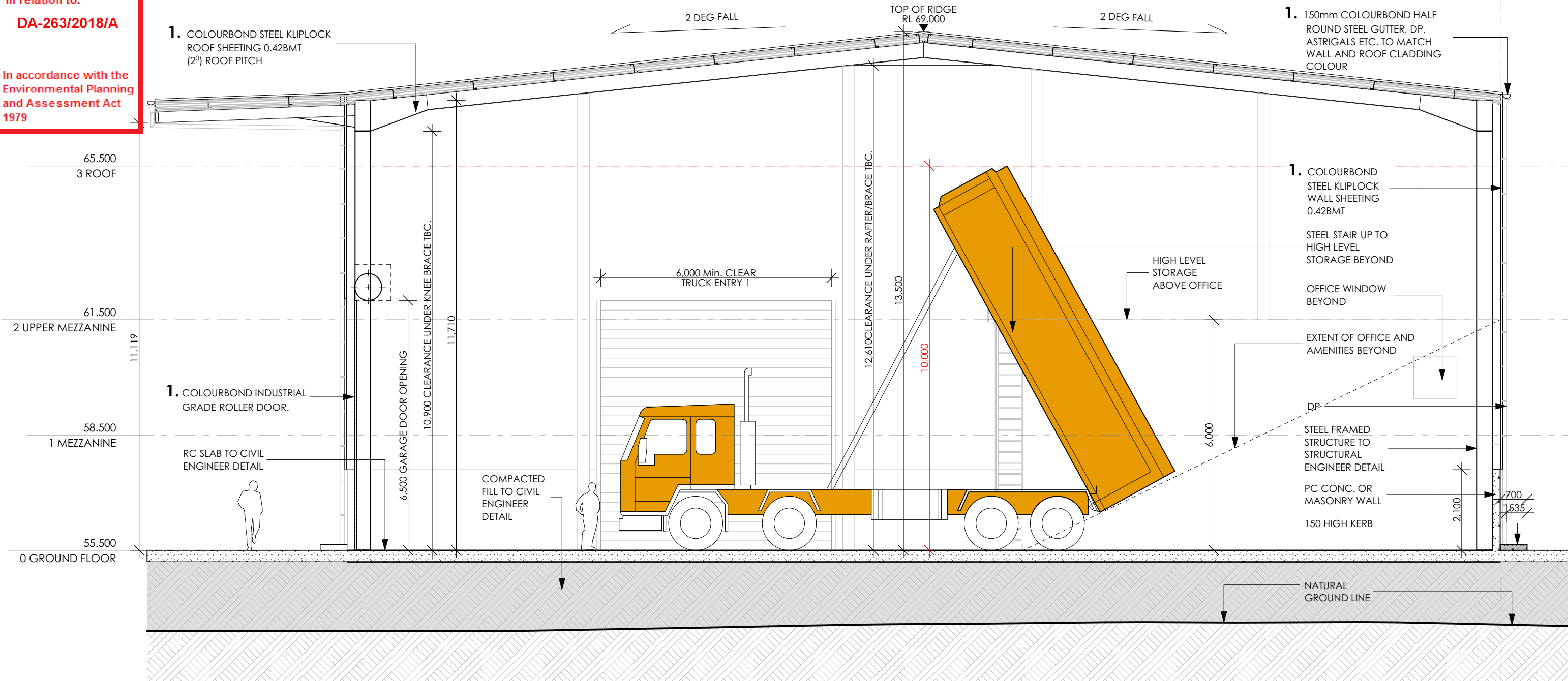


LIVERPOOL  
CITY  
COUNCIL

Endorsed document  
in relation to:

DA-263/2018/A

In accordance with the  
Environmental Planning  
and Assessment Act  
1979



# SECTION THRU PROCESSING SHED

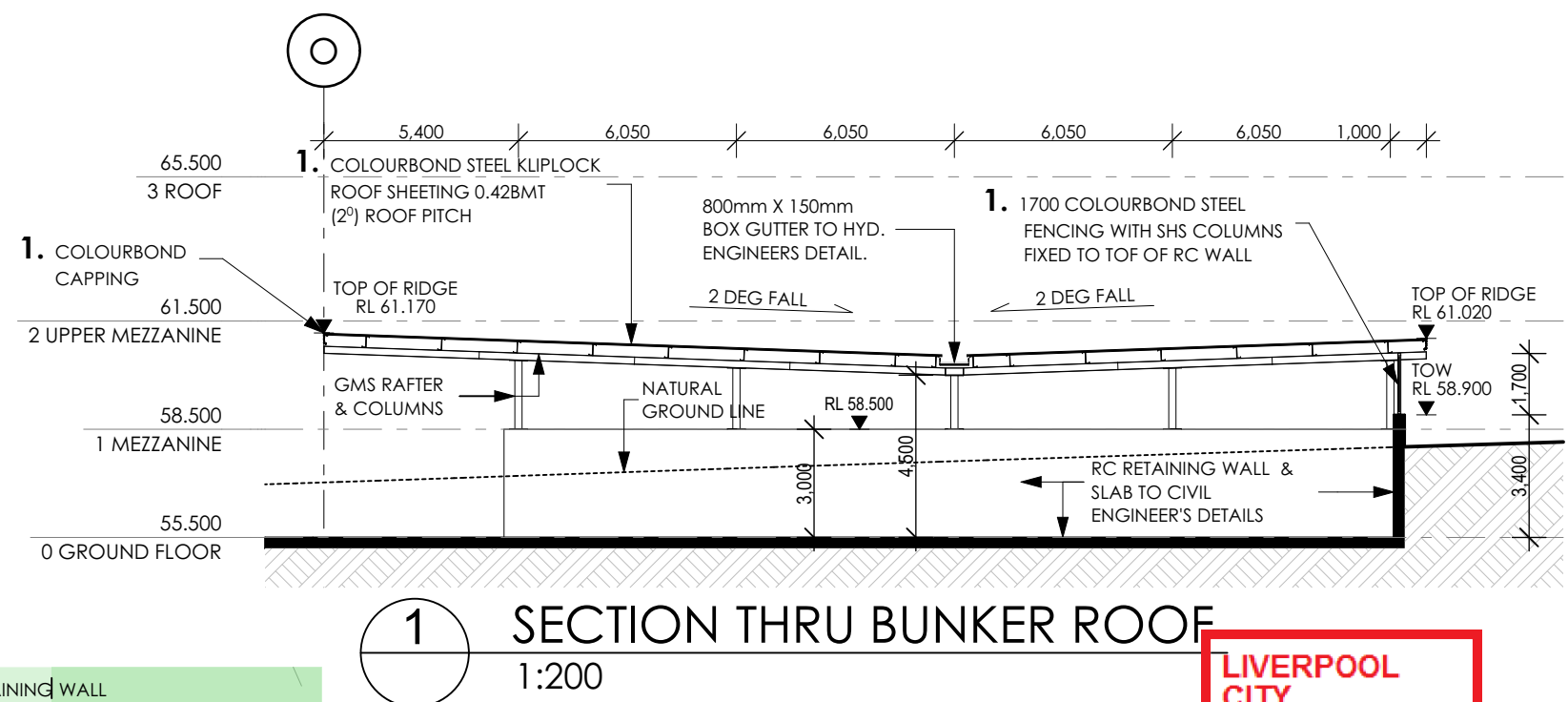
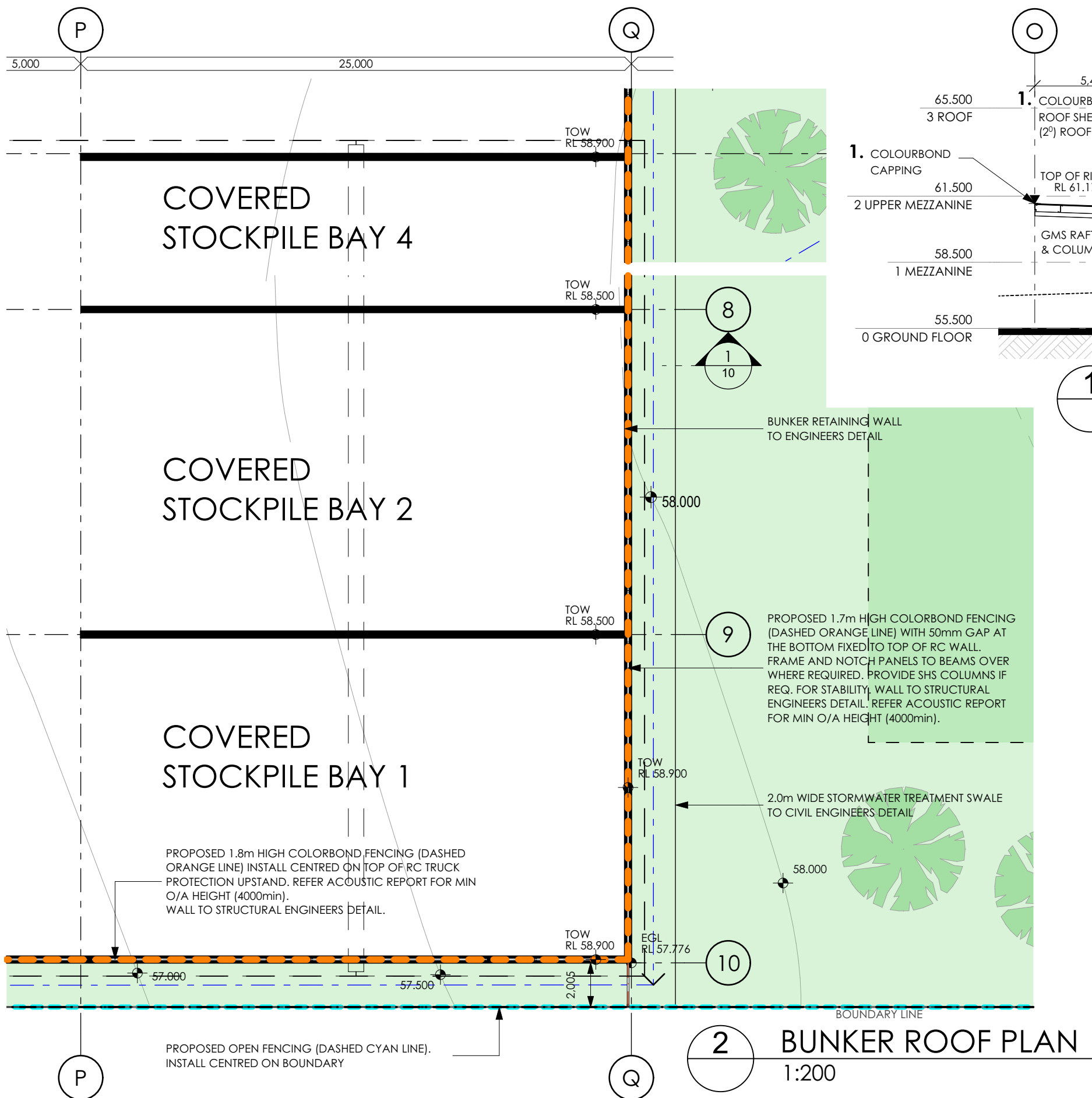
1:100



1. EXTERIOR COLORBOND CLADDING FOR  
SHED, BUNK ROOF & PERIMETER FENCE  
Colorbond 'PALE EUCALYPT'

5m  
1:100





**1. EXTERIOR COLORBOND CLADDING FOR SHED, BUNK ROOF & PERIMETER FENCE**  
Colorbond 'PALE EUCALYPT'

**LIVERPOOL CITY COUNCIL**

Endorsed document  
in relation to:

**DA-263/2018/A**

In accordance with the  
Environmental Planning  
and Assessment Act  
1979

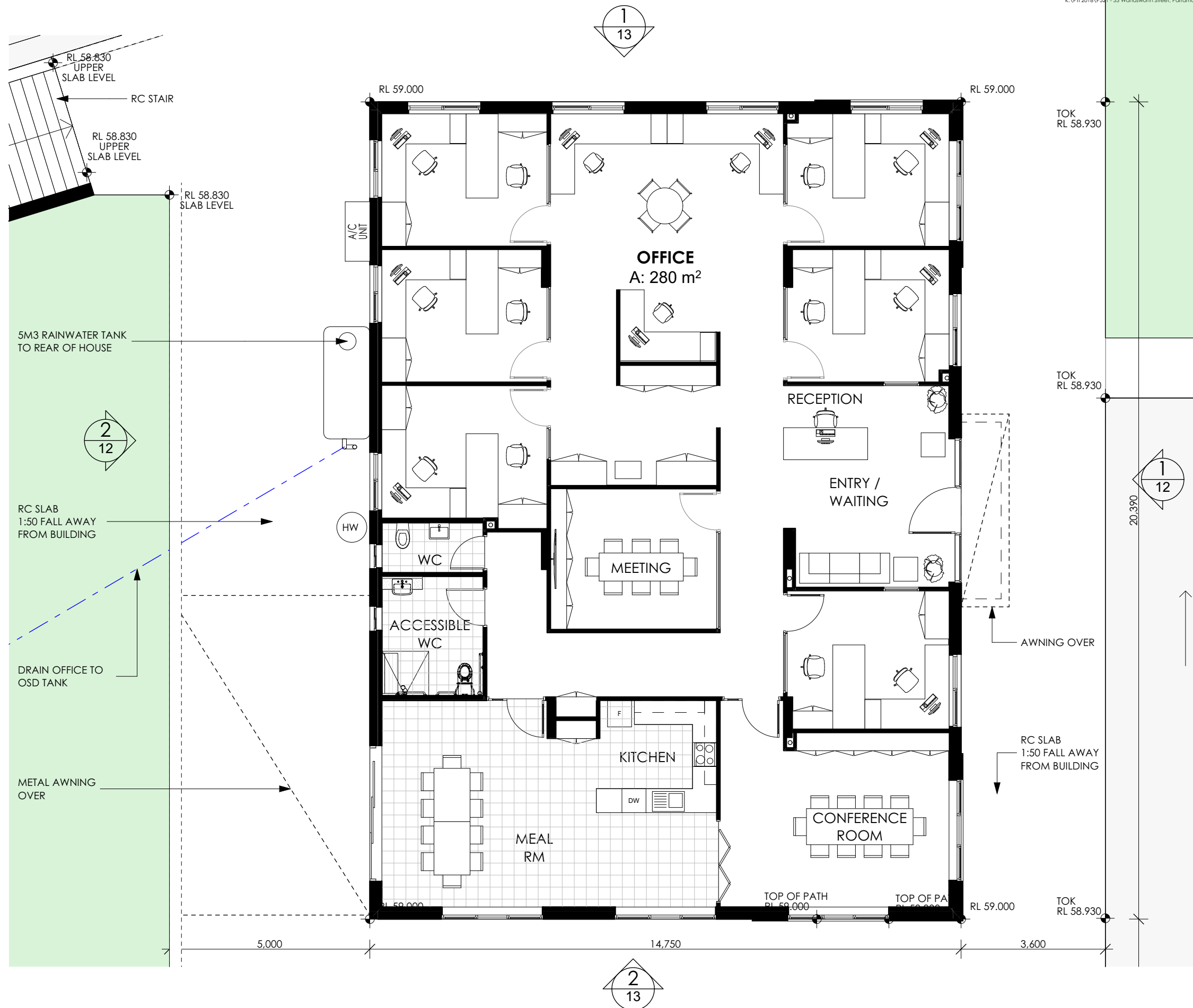


LIVERPOOL  
CITY  
COUNCIL

Endorsed document  
in relation to:

DA-263/2018/A

In accordance with the  
Environmental Planning  
and Assessment Act  
1979



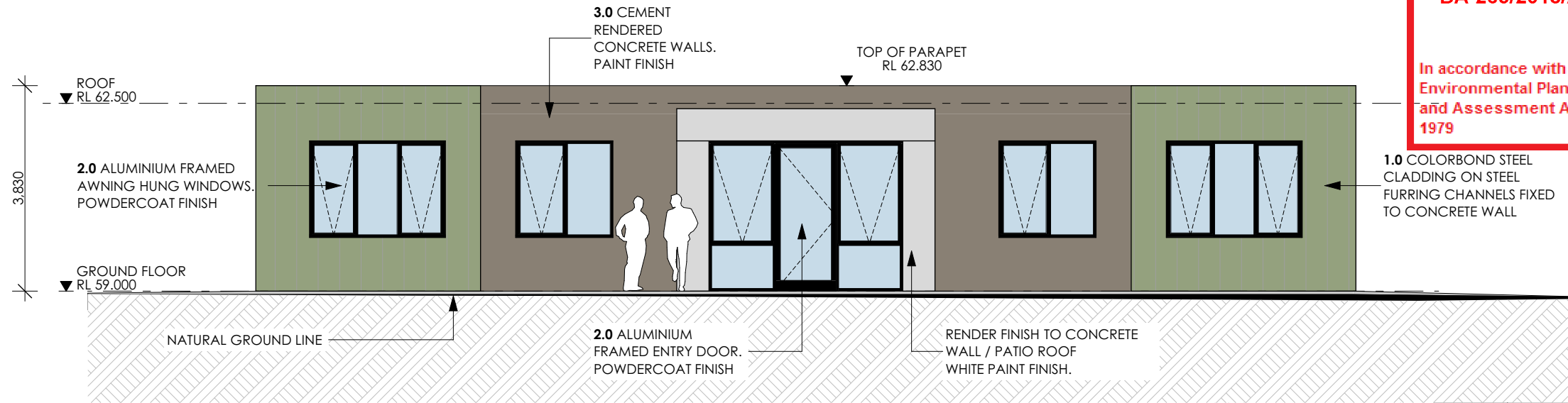


**LIVERPOOL  
CITY  
COUNCIL**

Endorsed document  
in relation to:

**DA-263/2018/A**

In accordance with the  
**Environmental Planning  
and Assessment Act  
1979**



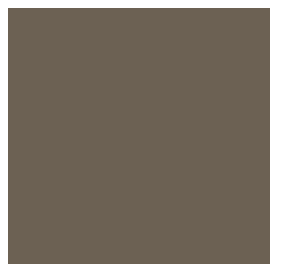
**1 EAST ELEVATION NEW OFFICE BUILDING**  
1:100



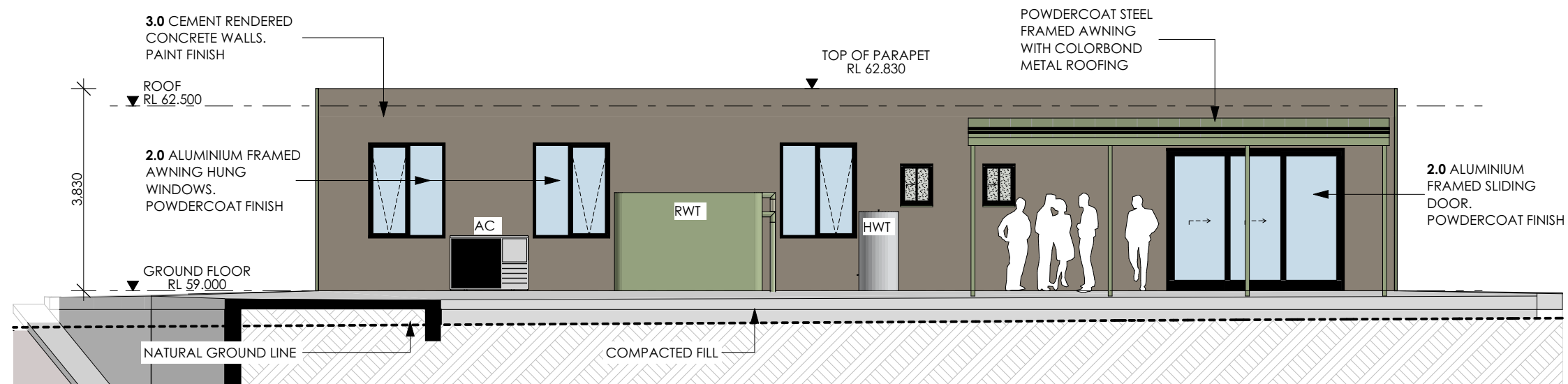
**1. EXTERIOR COLORBOND  
CUSTOM-ORB CLADDING**  
Colorbond 'PALE EUCALYPT'



**2. ALUMINIUM WINDOW &  
DOOR FRAMES**  
Colorbond 'Monument'

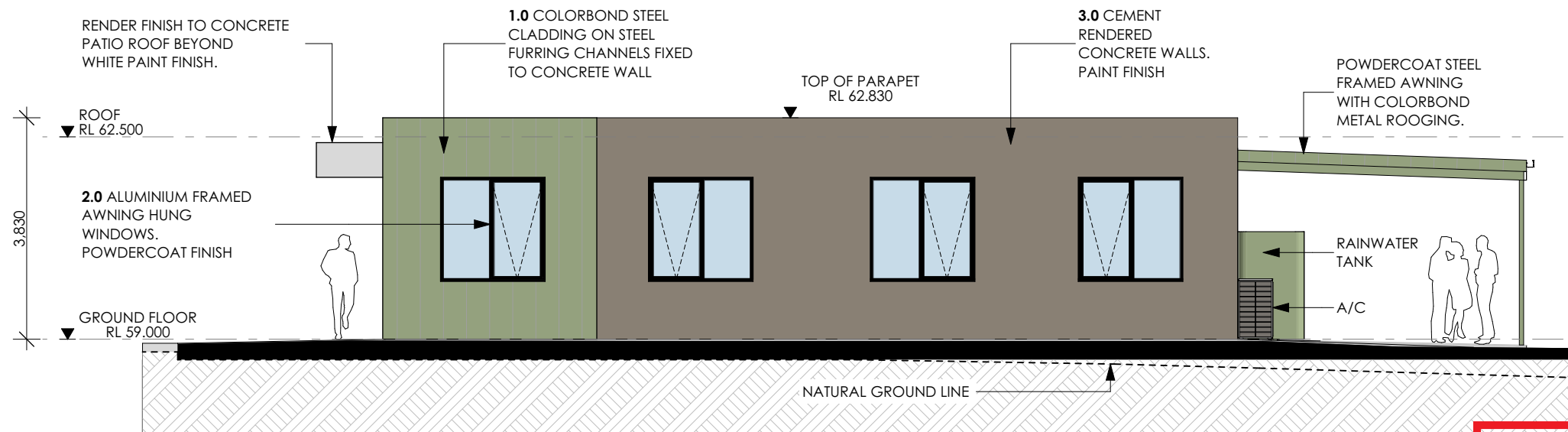


**3. RENDERED WALL PAINT FINISH**  
Colorbond 'Jasper'



**2 WEST ELEVATION NEW OFFICE BUILDING**  
1:100





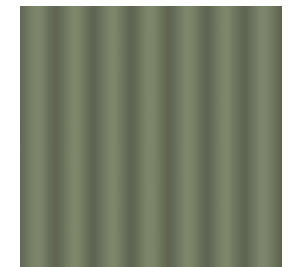
**1** NORTH ELEVATION NEW OFFICE BUILDING  
1:100

**LIVERPOOL CITY COUNCIL**

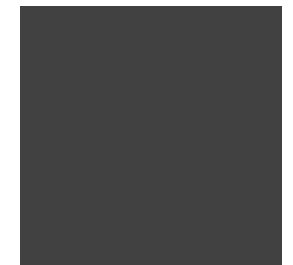
Endorsed document in relation to:

**DA-263/2018/A**

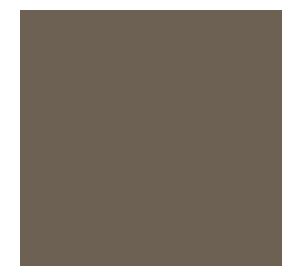
In accordance with the Environmental Planning and Assessment Act 1979



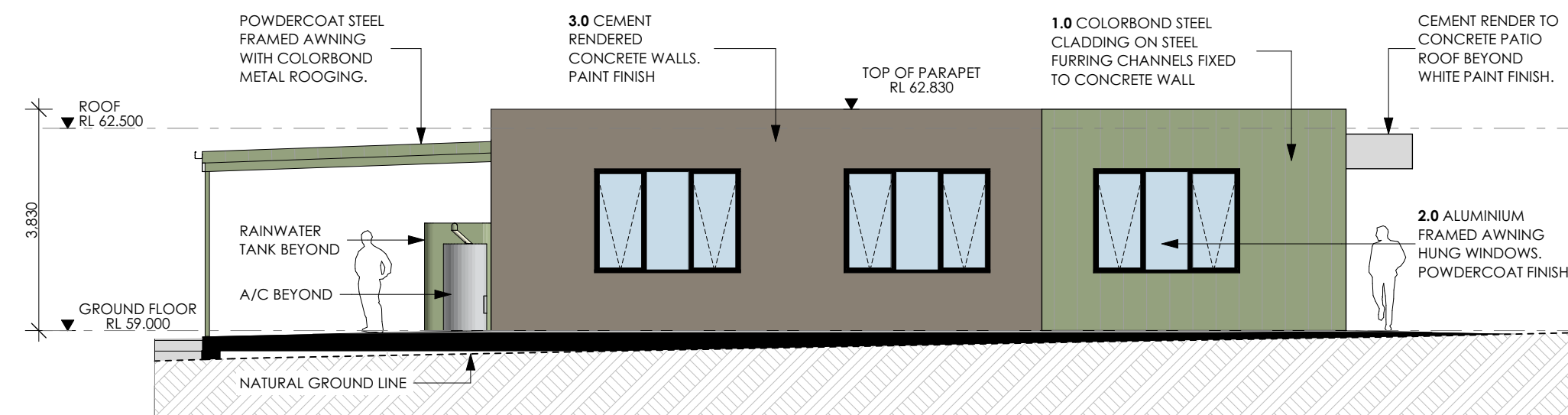
**1. EXTERIOR COLORBOND CUSTOM-ORB CLADDING**  
Colorbond 'PALE EUCALYPT'



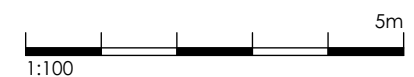
**2. ALUMINIUM WINDOW & DOOR FRAMES**  
Colorbond 'Monument'



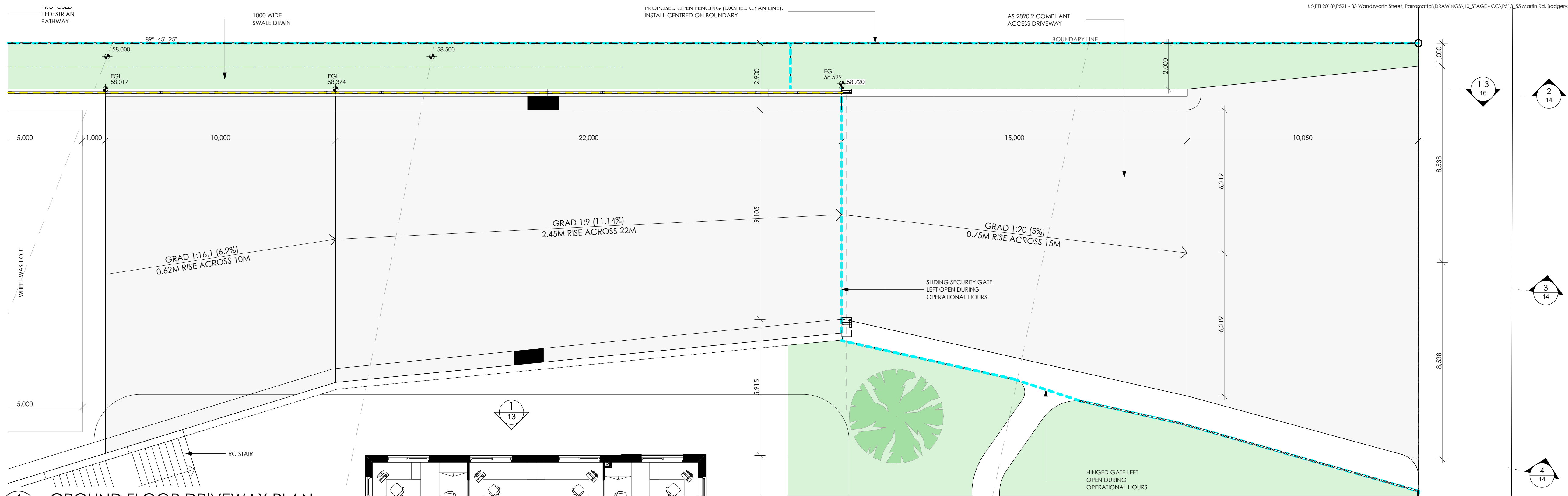
**3. RENDERED WALL PAINT FINISH**  
Colorbond 'Jasper'



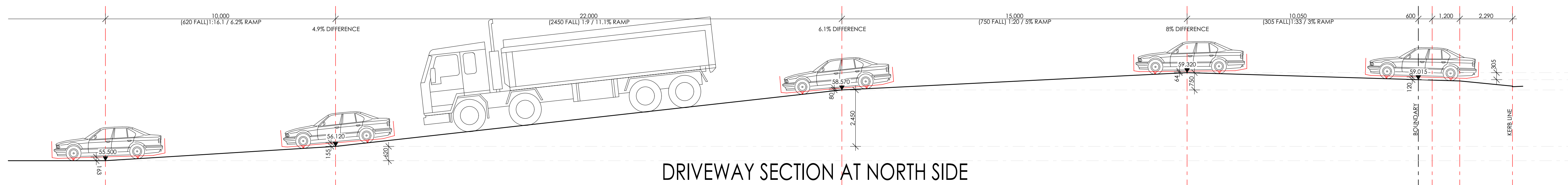
**2** SOUTH ELEVATION NEW OFFICE BUILDING  
1:100



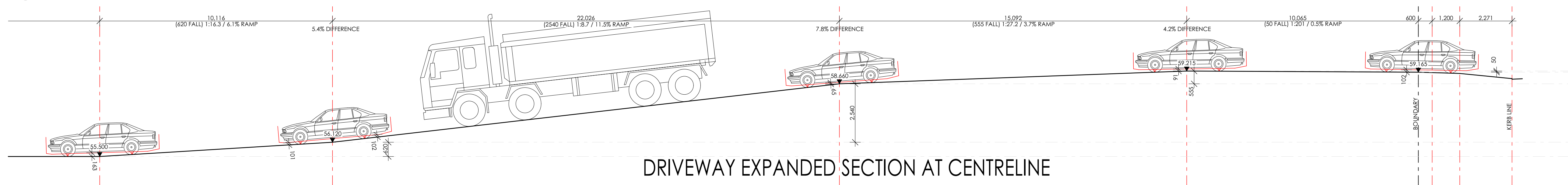




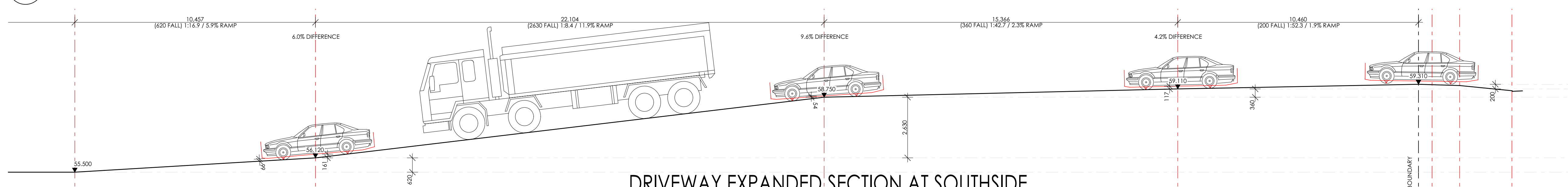
1 GROUND FLOOR DRIVEWAY PLAN  
1:100



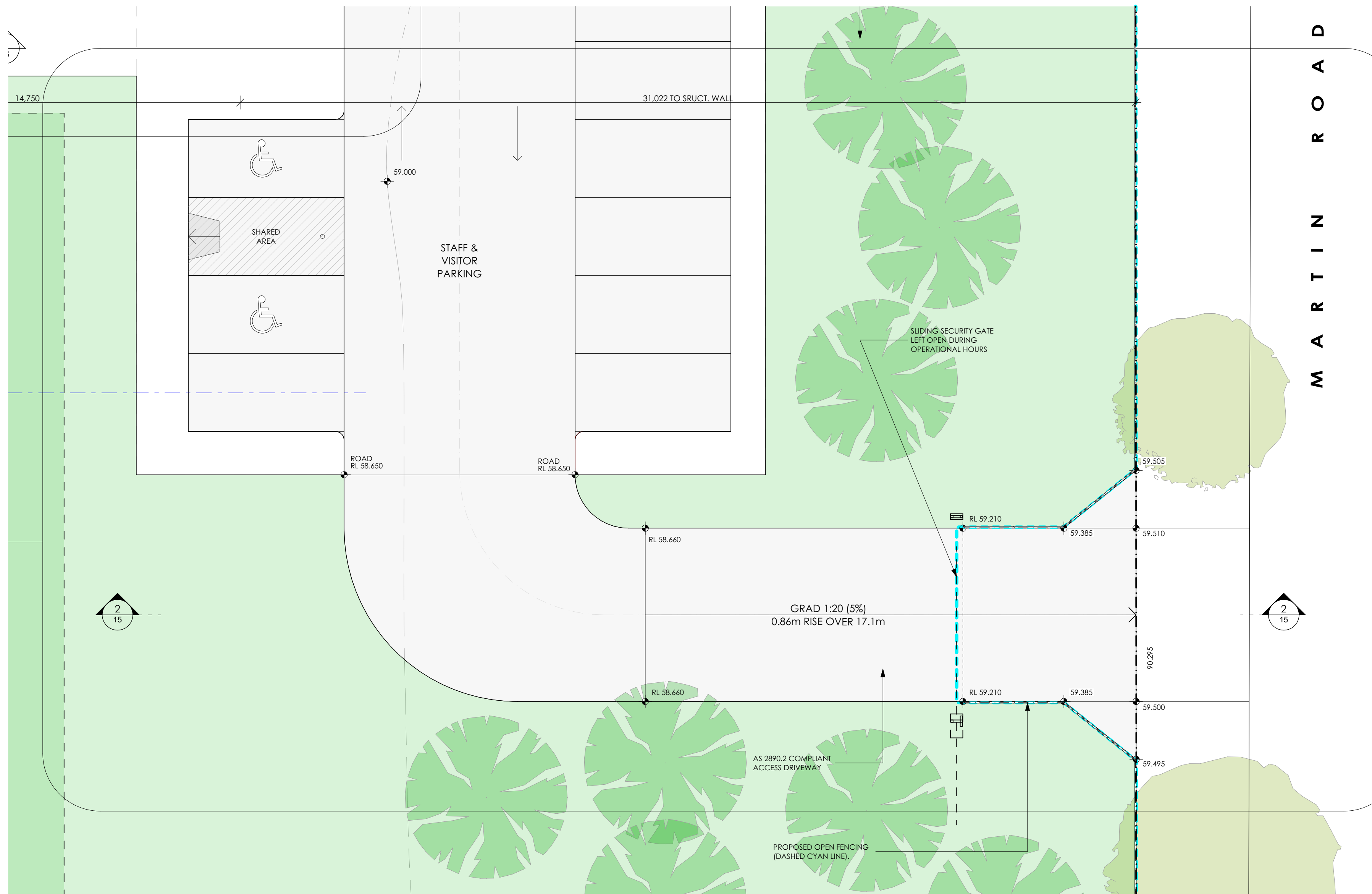
2 Driveway Section- NORTH side  
1:100



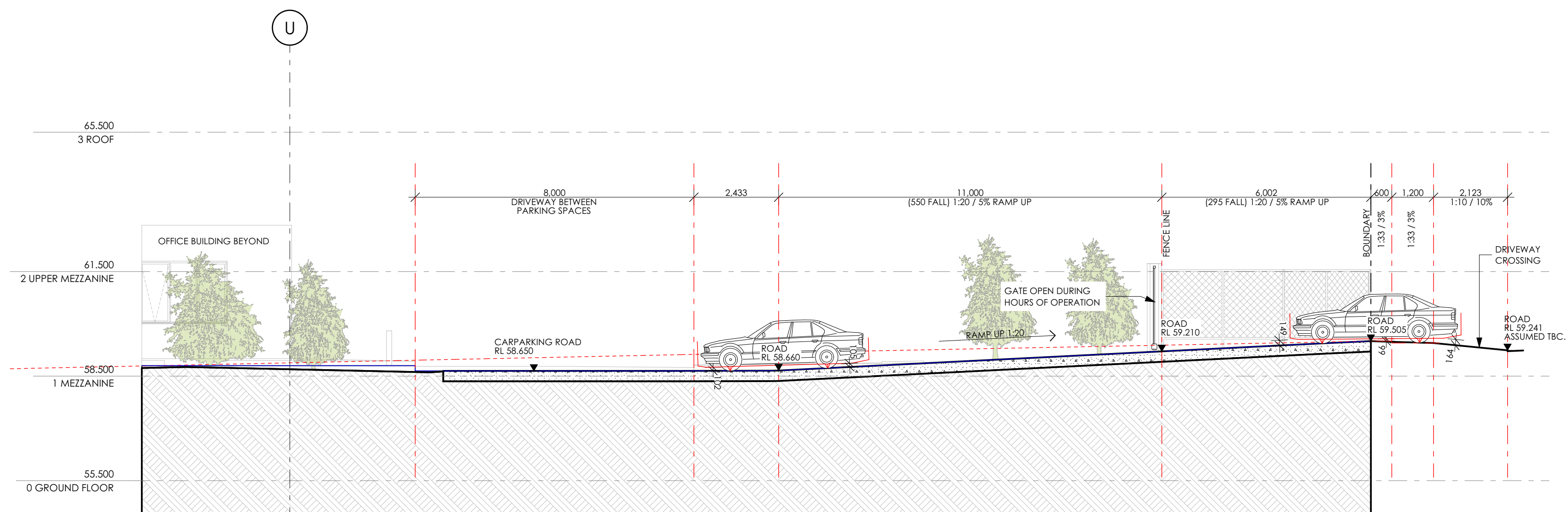
3 Driveway Section- CENTRELINE  
1:100



4 Driveway Section- SOUTH side  
1:100



1 GROUND FLOOR DRIVEWAY PLAN  
1:100



2 Driveway Section- CENTRELINE  
1:100

